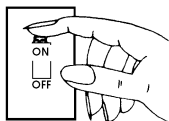


INSTALLATION INSTRUCTIONS

READ IMPORTANT SAFETY TIPS BEFORE PROCEEDING WITH INSTALLATION

SAFETY TIPS

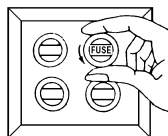


Turn fixture off! (Place wall switch in off position, if fixture has built-in switch or chain pull, switch or pull chain so fixture is off.)



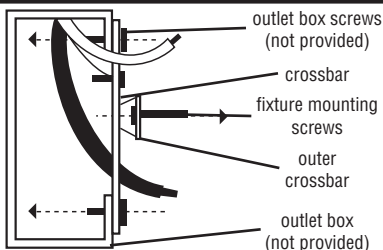
Next - go to the main fuse box. If your fuse box has an ON/OFF switch, simply place main power switch in OFF position.

OR



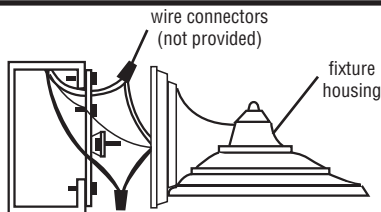
Screw-in type fuses - unscrew the fuse or fuses that control the power to the fixture or room you are working in.

1



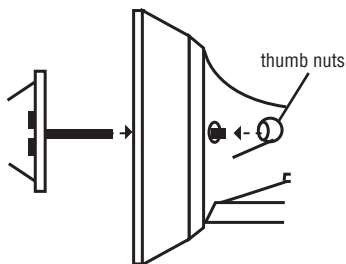
THREAD fixture mounting screws (provided) into outer crossbar. ATTACH cross bar to outlet box with outlet box screws (not provided).

2



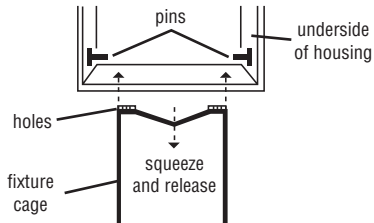
CONNECT THE WIRES. NOTE: Attach black fixture wire to black supply wire, white fixture wire to white supply wire. Do not mix them up. Use wire connectors (not provided). NEVER CONNECT GROUND WIRE TO BLACK OR WHITE POWER SUPPLY WIRES.

3



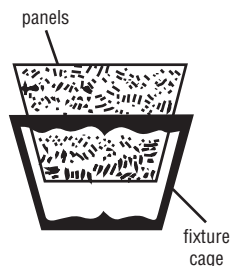
POSITION THE FIXTURE HOUSING over the fixture mounting screws and secure in place with the thumb nuts provided.

4



ATTACH FIXTURE CAGE TO FIXTURE HOUSING. Squeeze cage as shown. Position holes on side of cage over corresponding pins on underside of housing. Release cage - pins will snap into position.

5



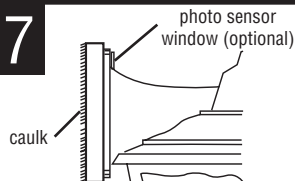
BEFORE SNAPPING HOUSING SHUT, install front and rear plastic panels first, textured side out, then drop in side panels.

6



HOLD LEFT SIDE PANEL AGAINST SIDE OF CAGE. Rotate free end of cage up to the housing and snap into place. Screw bulb into socket. Be sure to use bulb with wattage no greater than specified for this fixture.

7



NOTE: Fixture MUST be caulked with an acrylic caulk where fixture housing meets mounting surface. This provides a water tight seal when fixture is installed.

OPTIONAL PHOTO SENSOR: If this fixture has a photo sensor switch, do not apply excessive force to leads connected to photo sensor. Photo sensor must remain in clear window for proper operation.

 Clean only with mild soap and water. Avoid spraying with cleansers, insecticides, and pesticides that are petroleum based hydrocarbon products. These will degrade luminaire.

IS7033 Rev. C